

# INSIDE IVANHOE

## Ivanhoe Primary School Newsletter

Issue 18 – 15th June 2017

[www.ivanhoe.vic.edu.au](http://www.ivanhoe.vic.edu.au)

[ivanhoe.ps@edumail.vic.gov.au](mailto:ivanhoe.ps@edumail.vic.gov.au)

T: (03) 9499 1880 | F: (03) 9499 6784

OSHC: (03)9499 5226



Find us on  
**Facebook**

[Click to view all  
IPS Sponsors !](#)

### From the Principal

Dear Ivanhoe Primary School Community,

One part of our push to develop a whole school approach to health, wellbeing, inclusion and engagement is to create opportunities for community to get together and chat both formally and informally.



On Friday morning (16<sup>th</sup> June - TOMORROW) there is an informal opportunity for all parents of Years 4, 5 and 6 students to get together in the Multi Purpose Room / Innovation Centre for morning tea. (No rsvp required but please bring a plate). Some sketches of our new building are up on the wall in the room.

Ivanhoe Primary School has a strong culture of family involvement with the school. When families volunteer everyone benefits; parents and relatives get a clearer understanding of how the school works and develop stronger relationships with teachers and staff, children enjoy seeing their families involved in school life and learn the value of contributing to their community, teachers and staff are supported in their work and feel connected to the greater school community.

WE REALLY NEED YOU! HOWEVER, we also understand that lack of time, other commitments and sometimes just knowing where to start can be barriers to getting involved.

Recently School Council did some work to unpack volunteering at school to highlight areas that might help you get started. So here goes. Volunteering Options at IPS, Answers to Frequently Asked Questions and a Parent Testimonial.

## Volunteering Options

### CANTEEN

We are very lucky to have a full Canteen open daily at recess and lunch, but it can only function with the help of wonderful volunteers. This involves supporting our Canteen Manager, Jenny Ross, in food preparation and serving the hungry students.

**Involvement:** Option of helping out at recess 9am – 11am and/or lunch 12noon – 2.30pm

### SCHOOL BANKING

Our school banking program is currently organised through the Commonwealth Bank but we rely on volunteers to process the children's deposits. With sufficient helpers this can be quick and fun.

**Involvement:** Tuesday mornings from 9am (1-2 hours) – attend as often as you like.

### WORKING BEES

To keep our grounds looking great we run regular working bees. This involves general maintenance and gardening plus occasional special projects to improve the school. *Note: If you can't make your year level working bee you can join any other working bee during the year.*

**Involvement:** All families attend their year level working bee (1 per year) Sundays 9am – 12pm.

### PARENTS & FRIENDS ASSOCIATION (PFA)

Our Parents and Friends Association is a great way to get involved in the school and meet other parents. The PFA brings the school community together and runs many of the 'special days' at school such as; Welcome Picnic, School Disco, Mother's Day Stall, Father's Day Breakfast, Trivia Night and Annual Gala Ball.

**Involvement:** Regular evening meetings and assistance at events.

### CLASSROOM PARENT REPRESENTATIVES

Parent Reps are appointed for each class and their role is to build class community by supporting families and teachers. This involves co-ordinating the class contact list, organising regular social gatherings for parents and students and communicating important events such as working bees, the Gala Ball and School Fair.

**Involvement:** Organising one social event per term, plus general class-wide communication.

### CLASSROOM HELPERS

From Foundation to Grade 2 parents are invited to join the Classroom Helpers program. This involves undertaking the Classroom Helpers Course and then rostering on to help out in your child's classroom. This is a fantastic opportunity to support the kids and teachers while also getting an insight into how the classroom functions.

**Involvement:** Introductory course, then 1-2 hours once per week or fortnight.



## **PERCEPTUAL MOTOR PROGRAM (PMP) & FUNDAMENTAL MOTOR SKILLS (FMS)**

Students in our early years participate in weekly group physical development programs called PMP and FMS. Parent volunteers are required to help run this activity.

**Involvement:** ½ to 1 hour once per week – casual attendance is welcome.

## **SCHOOL EXCURSIONS & CAMPS**

Various opportunities arise through the year for parents to participate in school excursions and activities including; walking students to swimming lessons, going on day trips (e.g. to the Zoo) or helping out on a school camp (Grades 4 – 6). *Note: for some activities you may need a Working with Children Check. As a general guideline if a teacher is present you do not need a check, however if you are supervising children on your own you do need one.*

**Involvement:** Varies depending on the activity.

## **SCHOOL COUNCIL & SUB-COMMITTEES**

The school council is responsible for assisting the Principal and staff in the organisation and development of the school. The IPS Council comprises 10 elected parent members and 4 members of staff. There are also a number of additional sub-committees which report back into council. These include; Out of School Hours Care, Buildings & Grounds, Education, Finance, Canteen, Digital Learning Technologies and the School Twilight Fair (see below). Parents are encouraged to join any committee which interests them.

**Involvement:** School Council Meetings are held twice per term.

## **SCHOOL FAIR (BI-ANNUAL – NEXT FAIR IS NOVEMBER 18<sup>th</sup> 2017)**

The fair is the major fundraiser for Ivanhoe Primary and is run every second year. A great deal of support is needed including; running and contributing to class stalls both in the lead-up and on the day (e.g. food, craft, activities), co-ordinating performers (bands, student performances, etc.), organising sponsorship & marketing, general set up/pack up etc. on the day.

**Involvement:** Fair Committee & Class Stall Organisers; regular meetings & organisation.

## **Volunteering: Frequently Asked Questions**

### ***Do I need a working with children check to volunteer at the school?***

For some activities you will require a Working with Children Check. As a general guideline, if a teacher is present then you do not need a check, however if you are supervising children on your own you do need one.

You can find out more and apply online (free) here: [www.workingwithchildren.vic.gov.au](http://www.workingwithchildren.vic.gov.au)

### ***Do I need training to help out in the classroom?***

To participate in the Classroom Helpers program you need to complete the Classroom Helpers course run by the school during Term 1 each year. This course is a component of the Victorian Early Years Literacy Program and is designed to support the work of parents, helpers and aides who assist in classrooms. The program runs for three consecutive weeks and is presented by teachers from the school. Topics include: Being a Helper, Helping with Speaking and Listening, Helping with Reading, Helping with Writing.

### ***Do I need to work in the canteen all day or can I just help out for a couple of hours?***

You don't need to work in the canteen all day. If you prefer you can help out for just one of the following time periods; Recess 9am – 11am or Lunch 12 – 2.30pm.

### ***Can I come to another working bee if I can't make my year level one?***

Yes, you can come to another working bee if you can't make your year level one. If you can't make one at all we request a donation of \$20 to the school to help pay for ongoing maintenance works.

### ***Does the Class Representative have to run the Class Stall on Fair Years?***

No, the Class Rep is not required to run the Class Stall on Fair Years (but they are welcome to). They are, however, asked to help organise the parents who will run the stall and convey important information about the Fair to the class when needed.

### ***How do I know when the committees meet? Where do I find out more information?***

The weekly school newsletter is a great way to find out more about all the activities you can get involved in. The school website also has plenty of handy information and in 2017 we are launching a school management platform called Compass which will include a Parent Portal. For any further questions please contact the school office.

## **Volunteer Testimonial: Glenn Andersen (parent of Sam Yr 4 and Henry Yr 2)**

I like to volunteer for a whole range of reasons. It makes me feel like I am contributing and doing my bit around the school. There is a sense of achievement when you see something improved. It is a great example to set for my kids. I try to take them to working bees, even if they do a few small jobs and then have a play at least they get to see what goes on. It is a great way to get to know people and I have made a few friends who I now socialise with. I sometimes feel guilty that I miss my son's soccer and footy matches because I'm attending a working bee on a Sunday Morning, but again that is a good example to set for the kids. Above all the school really needs it. Given I rarely do the kids pick up or drop off, spending time at the school gives me a chance to get connected and see what is going on. Above all the school really needs it. Mostly the volunteer work is on school council and attending the working bees. I'm currently running a

"Restroom Reno Project" with assistance from a few others. This is a much needed project as you all will agree. We are currently looking at options which may include doing some of the work with parent volunteer help e.g. painting the walls, ceilings and floors. So stay tuned if you have a trade skill (electrician, plumber, carpenter) we made need you, if you don't have a trade skill we may need you to wash walls and paint.

### A Pep talk from Kid President to your child.

We all need a little encouragement every now and then. Kid President, knowing this, has put together a video you can play each morning as you wake up or to share with your friend who needs a kick in the right direction. Take a moment and spread some encouragement. "It's everybody's duty to give the world a reason to dance." <https://youtu.be/l-gQLqv9f4o>



Have a great day

Mark Kent  
Principal

#### Values:

Confidence, Independence, Persistence, Resilience, Respect

## Invitation morning tea

A social morning for all parents of  
Grade 4, 5 and 6 students.

Bring a plate

Friday June 16th 2017

9.00am (after the morning bell)

In the Multipurpose Room



### Library Fund

A library fund has been established to raise funds to ensure students have access to a wide range of valuable literature and up-to-date resources.

#### How You Can Help

Individuals and businesses in our community are invited to unite and help financially support the development of Ivanhoe Primary School Library Fund. Any donation you are able to give will make a difference.

Your gift to The Ivanhoe Primary School Library Fund is tax deductible and will help enrich the educational experiences of the children of Ivanhoe Primary School Library Fund.

As we are approaching the end of the financial year any contribution you make now can be receipted against your tax return.

### PAYMENT DETAILS

I would like to donate to the Library Fund: \$20 \$50 \$100 or Other \$..... Cheque / Cash / Direct Deposit

Parent's Name: \_\_\_\_\_ Eldest Child's Name: \_\_\_\_\_ Grade: \_\_\_\_\_

Please make cheques payable to the **Ivanhoe Primary School Library Fund** or Direct Deposit **Ivanhoe Primary School Library Fund Account** ComBank BSB: 063141 Account: 10148059 or Cash (please pay in person at the school office). All donations over \$2 are tax deductible. Please complete this slip and return to the school and a certificate with your child's name on it will go in a book chosen by the school.

# SPORTS NEWS



**INTERSCHOOL SPORT** Tomorrow, Friday 16th June, Ivanhoe PS plays St Anthony's PS in a home competition of Tee Ball, Netball, and Football. Netball & Teeball are played at IPS. Football will be at Seddon Reserve, Green Street. Good luck to all teams.

## Banyule Division Cross Country – Bundoora Park Wednesday 14 June.

Congratulations to the 7 IPS students who represented Ivanhoe District at yesterday's division event.

**2<sup>nd</sup> Joshua C – 11 Boys**

**3<sup>rd</sup> Avena H – 11 Girls**

**5<sup>th</sup> Ella S – 9/10 Girls**

**6<sup>th</sup> Sophie B 11 Girls**

**13<sup>th</sup> Will D - 11 Boys**

**14<sup>th</sup> James M – 11 Boys**

**Unfortunately Sophie S was unable to compete due to illness.**

**Joshua, Avena, Ella & Sophie will now compete at the Northern Region Cross Country on Wednesday 21 June. Good Luck!**



All Parents in FC, FH, FS and FMJ are invited to a

## Pizza and Drinks night for Foundation Parents

(with special encouragement to Dads to come along and meet).

**When;** Friday the 16th of June, from 7pm

**Where;** Upstairs at Vino Central,  
211 Upper Heidelberg Rd, Ivanhoe

**RSVP;**

ASAP so we can get an idea of numbers & how much pizza to order! – email [samara.greenwood@sgarch.com.au](mailto:samara.greenwood@sgarch.com.au) or text Samara on 0425 720 274

We'd love to see as many parents there as possible, it will be a great chance to have a night out without kids!

## DIARY JUNE

June 21	Region Cross Country Bundoora Park
June 22	Battle of the Bands 2.40—3.30pm
June 23	IDSSA Winter Finals
June 26-30	Grade 5 Camp
June 30	Last day of Term 2
July 17	First day of Term 3
August 19	Trivia Night

## RIDE TO SCHOOL— GOLDEN SHOE DATA COLLECTION DAY—

**TOMORROW,  
FRIDAY 16th JUNE**



## FIRST AID ROOM LAUNDRY ROSTER

Each Friday afternoon the beds need to be stripped and remade. The sheets and pillow cases are to be laundered over the weekend and returned to the First Aid room or office on Monday.

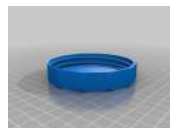
### THIS WEEK'S ROSTER:

**Friday 16 June  
2017**

**Ellie McDonald**

## The Lunchtime Club

is collecting plastic lids from bottles and containers for an art project. Please help us by dropping off your clean lids in the labelled box near the office window.



## Star of the Week

FC	Stefan
FH	Amy H
FMJ	Jacob S
FS	Eli
1H	Stephanie M
1D	Zoe F
1M	Zoe W
1/2O	Sophie G
2H	Jemmy S
2L	Iris D
2G	Taylor D
3C	Will R
3M	Anita R
3US	Ivanka Z
3/4P	Ghazal M
4C	Lana S, Tom T
4M	Fin C
4R	Luke F
5H	Lloyd H, Ruby M
5M	Julia M
5S	Lara H
5E	Blake G
6H/P	Oskar B
6S/R	Joshua C
6V	Scarlet B
ART	
ITALIAN	Astrid P (1H)
MUSIC	Orchestra, 2H
PE	Vehaan, Saanvi
ICT	Grade FMJ

**L.O.L!**

What do you give a sick bird?  
*Tweetment.*



## ANY OUTGROWN SPORTS KIT?

The Boots For All charity ([bootsforall.org.au](http://bootsforall.org.au)) works to help less fortunate kids and families to get into sport, by collecting and donating new and nearly-new sports gear. Do you have any sports clothes, boots or equipment that you have grown out of? Please put anything in reusable condition in the box in the main corridor near the office. Adult-sized kit is good too. Thanks!

Lewis C, 6V



# Your Canteen News

ORDER ONLINE through [www.myschoolconnect.com.au/ivanhoe](http://www.myschoolconnect.com.au/ivanhoe) Order by 8:45am for that day!

## Online ordering TIPS

### Cancelling orders –

#### How do parents cancel a lunch order?

Lunch orders can be cancelled in two ways:

##### Method 1. BEFORE the 8.45am cut off time

- Log into your My School Connect account
  - Select Dashboard
  - Select order history
  - Select VIEW
  - Edit Order
  - CHOOSE CANCEL Button, then CONFIRM
- Your order will be automatically cancelled.

##### Method 2. AFTER the 8.45am cut-off time

RING JENNY

94991880

OR

0412348 554

(canteen mobile)

BEFORE 10.30am

Orders cannot be cancelled after this time

## Parent Roster

Date	Time	Name
Fri 16 <sup>th</sup> June	9.00	Nan L
	10.30	Christabel & Ella
	11.30	Kelly T Help needed
Mon 19 <sup>th</sup> June		Help Needed Help Needed
Tues 20 <sup>th</sup> June	10.30	Lorraine Pearce
Wed 21 <sup>st</sup> Jun		Help Needed Help Needed
Thurs 22nd	9-11.30 11.30-1.50	Nicole H Amanda H Liz L
Fri 23 <sup>rd</sup> June	9-1.50	Robin Cotton HELP NEEDED

## Sandwich of the Month

JUNE

Claudia and Murphy's

### The Marvellous Meatball Sandwich

Meatballs with lettuce tomato & cucumber on a long roll

Don't forget to enter for next month!

You could be the winner!

Entry box is at the canteen.

Available Every day at Recess

Hot Chocolate \$2.00

### Next Week's

## Morning Tea @ the Canteen Counter

Mon 19 <sup>th</sup> June	Tues 20 <sup>th</sup> June	Wed 21 <sup>st</sup> June	Thurs 22 <sup>nd</sup> June	Fri 23 <sup>rd</sup> June
Pizza muffins (English muffin topped with pizza sauce and cheese) \$1.00	Raspberry choc chip Mini Muffins 50c	Mini carrot Cakes 50c Pumpkin Soup \$2.00	Mouse traps (vegemite and grilled cheese toast) \$1.00	Mini Muffins 50c

To volunteer at the canteen, or if you have any questions, please contact Jenny  
on 94991880

**BATTLE OF THE BANDS****Thursday 22 June****2.40—3.30pm****School Hall**

Performers:

**6V**—Something Just Like This**6SR**—Faith**6HP**—No Money**Grade Five Band**—Can't Stop The Feeling*Massive Jam:**Seven Nation Army**All Welcome!*

Foundation to Year Four students invited to vote for the winner.

It should be a cracking show.

**Parents**, if you can spare an hour to help us set up the stage and all the equipment, we will be starting our preparations at 12pm.



## 2018 Enrolment

Parents of children who are due to start school next year are urged to submit a completed enrolment form at their earliest convenience.

Please collect an enrolment form from the school office or download one from our website.

The completed form must be accompanied by documents for proof birth, residence and immunisation.

The Transition process begins on 5th September.

## 2017 Fair Mystery Bags



FC are taking on the Mystery Bags stall for this year's fair, and we are currently collecting donations to fill these!

If you have anything you would like to donate - eg: **small toys, stationery, hair accessories, jewellery, art, craft, etc** - there is a box outside the staffroom for you to place the items in.

We appreciate any donations! Thanks so much.

From FC

## GARDEN GROUP

**Monday, 19th June**

Meeting in the front garden at 9:30 or immediately after assembly. All welcome.



### IVANHOE PRIMARY SCHOOL

#### OUT OF SCHOOL HOURS CARE

24-Hour answering  
machine **service:**

**9499-5226**

**Email: iposhc@  
optusnet.com.au**

### OUT OF SCHOOL HOURS CARE FEES

The fee schedule for each child per session is:

Before School Care - \$13.50.

After School Care - \$16.50

#### **Early Finish:**

1.30pm—3.30pm \$16.50.

1.30 pm—6.00 pm \$30.00

#### **Curriculum Day:**

Half Day \$30.00.

Full Day \$50.00

Strategies for parents as referred to in the DET website:

<http://www.education.vic.gov.au/about/programs/bullystoppers/Pages/parentchild.aspx>

Talk to your child about the tips and advice offered on the student section of this website (<https://kidshelpline.com.au/>)

Give them the Kids Helpline telephone number 1800 55 1800 to use if they ask to talk to someone other than the school, or you don't feel able to support them.

### CHILD SAFETY: Protecting children from abuse is our responsibility.

*Ivanhoe Primary is committed to safety and wellbeing of all children and young people. This will be the primary focus of our care and decision-making.*

*Ivanhoe Primary has zero tolerance for child abuse.*

*Ivanhoe Primary is committed to providing a child safe environment where children and young people are safe and feel safe, and their voices are heard about decisions that affect their lives. Particular attention will be paid to the cultural safety of Aboriginal children and children from culturally and/or linguistically diverse backgrounds, as well as the safety of children with a disability.*

*Every person involved in Ivanhoe Primary has a responsibility to understand the important and specific role he/she plays individually and collectively to ensure that the wellbeing and safety of all children and young people is at the forefront of all they do and every decision they make.*

## **SCHOOL COUNCIL MEETING, JUNE 15<sup>th</sup>**

### **Report**

Maddison Architects presented the design of the Capital Works Project. School Council endorsed the design and refurbishment to existing main building. (Plans now on display in the front foyer, hall and multi-purpose room)

Welcome to Pam Wright to the School Council as Acting Assistant Principal.

Current enrolment 610 students

Correspondence with Banyule City Council and Victorian Road Authority and Examination of Pedestrian Safety on Livingston St with the new proposed building development.

Discussion regarding parent engagement and volunteers with in the school community. Morning tea for grade 4,5 and 6 parents tomorrow with a suggestion box

Inclusive Schools Playground build has gone out to tender for construction.

Update on the Annual Implementation Plan –

Student Achievement	Ongoing curiosity and learning
	Review of teaching approach undertaken by staff
	Data and Digital Learning survey to gain insight into teacher experience and understanding. Professional Development plan for DLT.
	Teacher Focused goal development in Performance and Development Plans
Engagement	Year 4,5 and student attitude surveys
	School Captains addressing assemblies and junior school councillors to give greater voice.
	Exploring leadership and student voice across the school
Well Being	Timetabled House events
	Ongoing visual representation evident across school
	Restoration practices in addressing challenging behaviours
	Promotion of shared culture
	Sharing of values with the community.
Networks	Engagement with the Banyule/Nillumbik Network
	Banyule Mini Network group for Teacher Professional Learning
	Exploring specialist shadowing with Ivanhoe East

Balance Sheet and Operating Statement not presented to School council.

School Council examined Family Balance Reports. Follow up of parents who have not paid Section B of book list. Reduced number of voluntary DLT payments at this stage of year.

Canteen Survey Endorsed and Canteen Policy to have minor changes before endorsed by school council.

Endorsement of Bullying Prevention Policy

Plans to refurbishment toilet block of main building. Quotes being established.

School Council approved requests from OSHC for rubberisation surface underneath grade 2 playground, bike racks and a large playground Jenga blocks. 3 iPads purchased to assist with administration.

Grant Application submitted for the Cultural, Connections and Change good practice – intercultural and understanding grant to the value of \$5000.

Congratulations to Susan Hoebee-Shearer and front gardening group on approval of a \$300 nature and garden grant for the front garden.

Twilight Fair planning well underway and fair committee working hard.

### AMBULANCE COVER

A trip to the hospital in an ambulance is expensive. Parents are strongly advised to take out ambulance cover for all family members.

### SICKNESS AT SCHOOL

Parents are reminded to keep children home if they are unwell. School is not the place for sick children and it is not appropriate to expose children and staff to illnesses and contagious diseases. A few days rest makes a big difference. Your co-operation is appreciated.

**Parents are urged to log into COMPASS to register their child's full day absence.**

### COMMUNITY NOTICEBOARD

Items in Community News are subject to space availability. The school does not accept responsibility for any goods or services advertised in this newsletter

## ENTERTAINMENT BOOK

Ivanhoe Primary is pleased to be selling the **17|18 Entertainment™ Memberships** as a fundraiser in 2017 – the Memberships are now available to **order!** You can pick up a copy from the office **immediately!**

You can choose between the traditional **Entertainment™ Book** or you can purchase the **Digital Membership**, which puts the value of the Entertainment™ Book into your iPhone or Android smartphone, all for just \$70!

The Entertainment™ Memberships contain over 800 valuable up to 50% off and 2-for-1 offers for many of the best restaurants, attractions, hotels and retailers in Melbourne. **Each Membership sold raises \$13 for Ivanhoe Primary to help us raise much needed funds.**

Please show your support by visiting the link below and purchasing your Membership today:

**[www.entbook.com.au/183d615](http://www.entbook.com.au/183d615)**

For any enquiries please contact:  
[ivanhoe.ps@edumail.vic.gov.au](mailto:ivanhoe.ps@edumail.vic.gov.au)



**A Fun way of learning another language from the ages of 2-12 at Ivanhoe Primary School**

**Lesson Times: French Thursday 3.45—4.45pm**

Visit our Facebook page for more details.

<https://www.facebook.com/LCFFunLanguages/>

**ENROL NOW** at [www.lcclubs.com.au](http://www.lcclubs.com.au) or email us for more information at [support@lcclubs.com.au](mailto:support@lcclubs.com.au)

### OFFICIAL OPENING OF RESURFACED PITCH YARRA VALLEY HOCKEY CLUB

Cyril Cummins Reserve, Liberty Parade, Bellfield.

**Saturday 17th June, 11am—5pm.**

40 years of hockey: 1977—2017. First premier league games on home turf. **Food, entertainment and fun for the whole family.**



olmc  
heidelberg

*A community with a passion for learning*

**Enrol Now for Year 7 – 2019**

**Applications close:** Friday 25 August 2017

**Offers posted:** Friday 13 October 2017

**Acceptance Required:** Friday 27 October 2017

**Experience the OLMC community for yourself.**

**Term 3 School Tours**

- Wednesday 19 July 4.30 – 6.00pm **Twilight Tour**
- Monday 24 July 9.00 – 10.30am **Morning Tour**

For bookings go to –

<http://www3.olmcheidelberg.catholic.edu.au/new/enrolments/college-tours>

**Enquiries:** College Registrar, Merri O'Halloran

T: 94592511 E: [mohalloran@olmcheidelberg.catholic.edu.au](mailto:mohalloran@olmcheidelberg.catholic.edu.au)



### DONATIONS FOR ORPHANAGES IN THE PHILIPPINES

I have a friend traveling to The Philippines and would like to collect items listed below to send to orphanages.

**Suggested items for donation are:**

**New / Used / Preloved:**

Coloured & lead pencils, Pens & Coloured pens, Textas & Crayons, Erasers & Sharpeners, Pencil cases & Rulers, Glue sticks, Paddlepop sticks, Coloured pipe cleaners, Stickers & Stamps, Hats & Backpacks, Exercise books, Paint brushes & paints, Loom bands, Rolls of ribbon (for hair), Colouring books/Activity books, Stencils & Buttons, Lunch boxes, Woolworths marvel heroes discs, Zippers to make pencil cases, Chalk, Badges, Magnets, Key rings.

**Please leave your donations in the box at the school office by Friday June 23rd** to pass onto my friend. Items in good conditions only please, as it costs money to post overseas.

Thank you,

Sue Germano (parent of IPS student)

### HEIDELBERG SYMPHONY ORCHESTRA— EDUCATIONAL CHILDREN'S CONCERTS

Heidelberg Symphony will be performing educational concerts for children and their families on Sunday July 30th, 2017. Concerts will start at 1.30pm and 3.30pm.

Each concert features an educational session "All About the Orchestra" led by narrator Christopher Carolane prior to the performance of the heartwarming tale of "Peewee the Piccolo".

Each concert runs for approximately 50 minutes and will be held at the Performing Arts Centre, Ivanhoe Girls' Grammar School, Noel Street, Ivanhoe.

Tickets are on sale now for \$10 per seat (adult, concession, child) and can be purchased at [www.heidelbergssymphony.com.au](http://www.heidelbergssymphony.com.au)

or by calling 9005 1792.